



Fractions, Perimeter and Area

Week of April 20th

Mrs. Elasky and Mrs. Baker



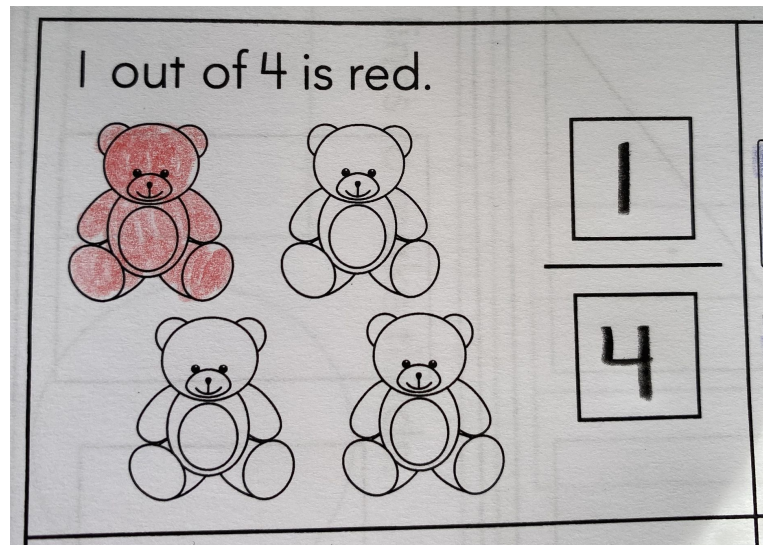
MONDAY

Make a Fraction

$$\frac{1}{4}$$

Numerator
Number of items shaded

Denominator
Total number of items

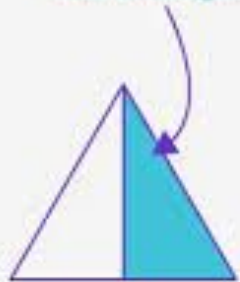


One fourth ($\frac{1}{4}$) of the bears are colored in

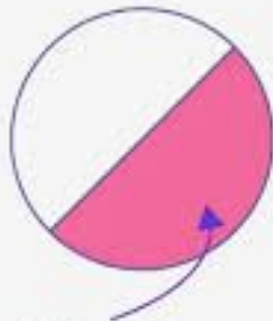
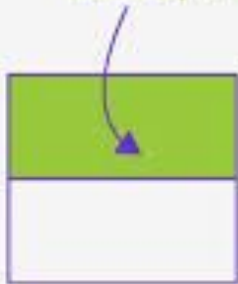
Halves

Complete the Halves worksheet

Half a triangle



Half a Square



Half a Circle

Halves

Name _____

Color the shapes that show halves.

Color $\frac{1}{2}$

Draw lines to make halves.

--	--	--	--

2 Grade 2 • Unit 6 • Lesson 18

Guided Math, By Reagan Turnstall

© Reagan Turnstall



TUESDAY

More Fractions

Watch the BrainPop “More Fractions”

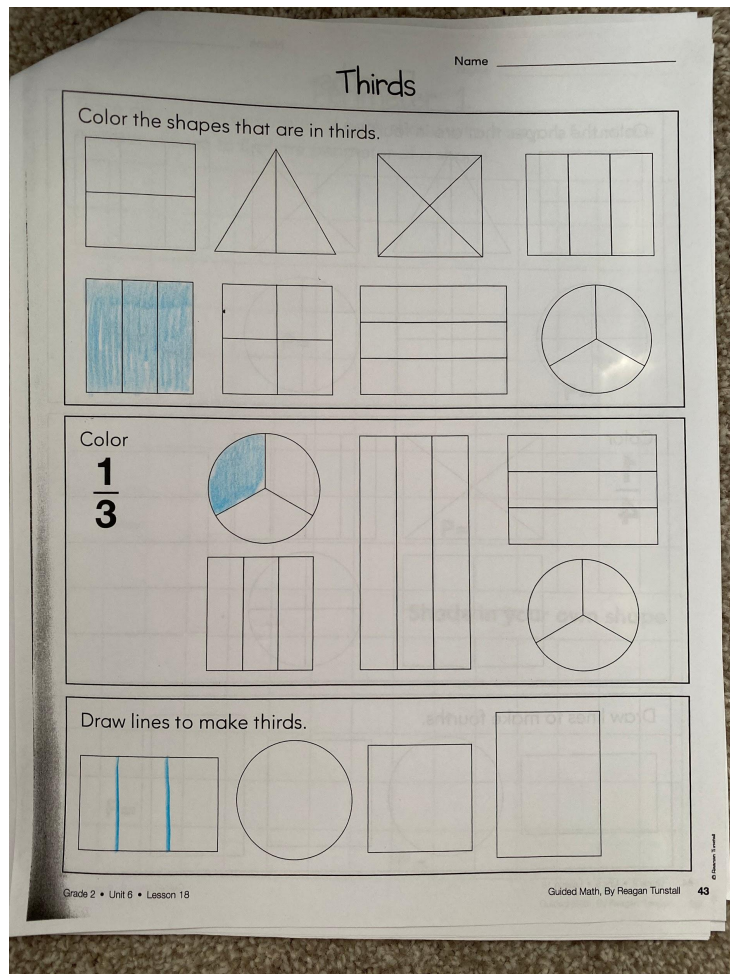
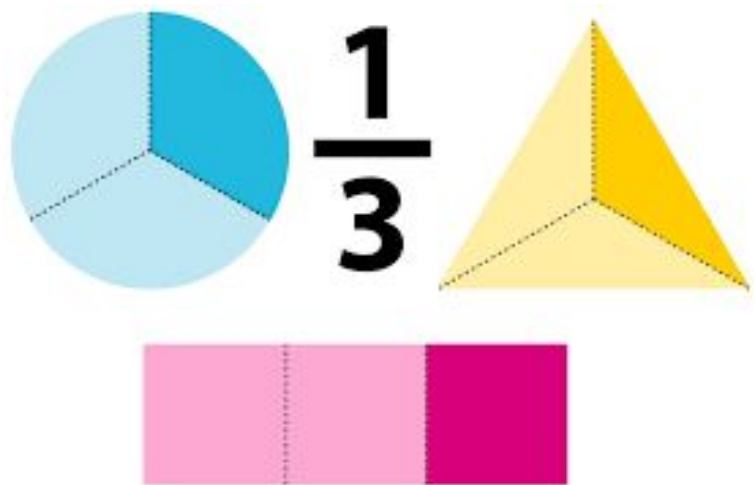
<https://jr.brainpop.com/math/fractions/morefractions/>

Username:Elasky2nd

Password: fit123

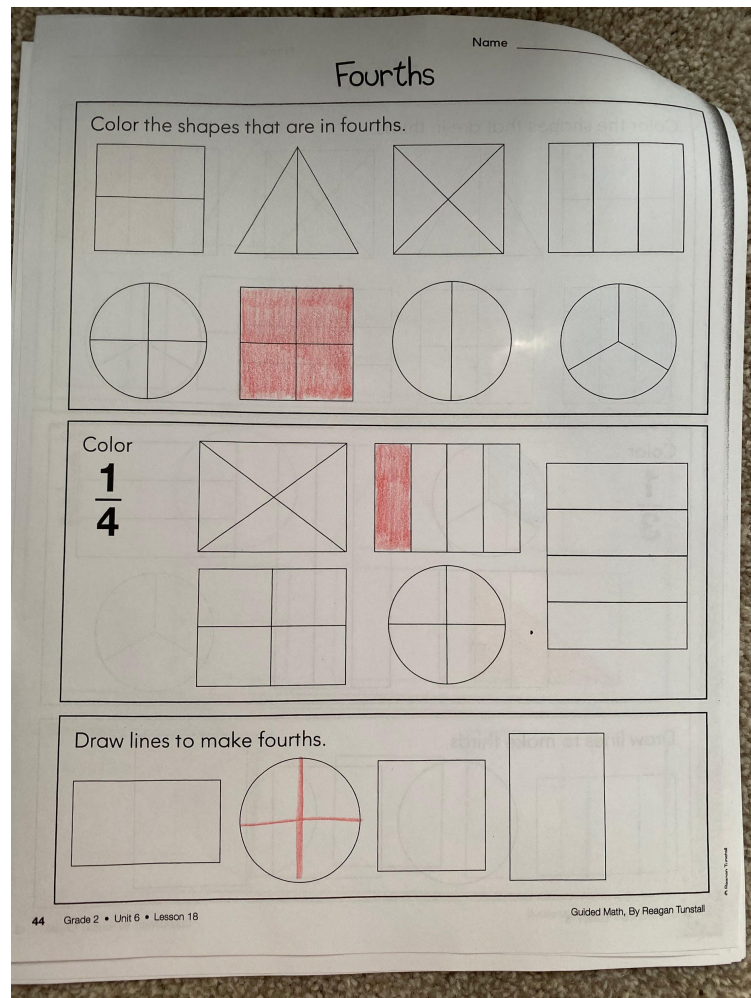
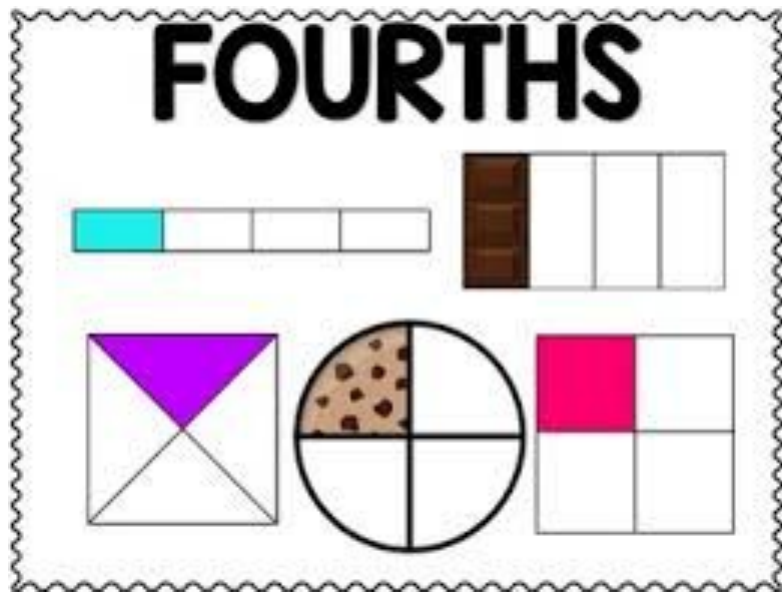
Thirds

Complete the Thirds worksheet



Fourths

Complete the Fourths worksheet





WEDNESDAY

Perimeter

Watch the BrainPop
“Perimeter”

<https://jr.brainpop.com/math/measurement/perimeter/>

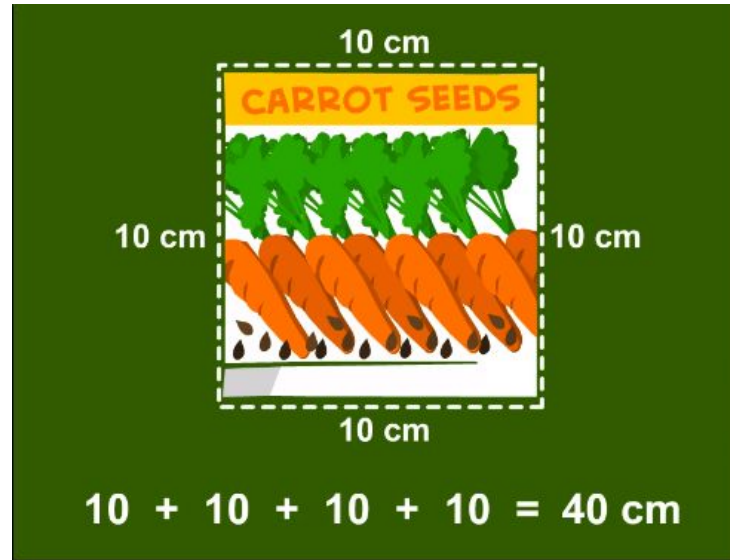
Username:Elasky2nd
Password: fit123

Perimeter

The total distance around something

How do you find the perimeter?

- Add the length of the sides



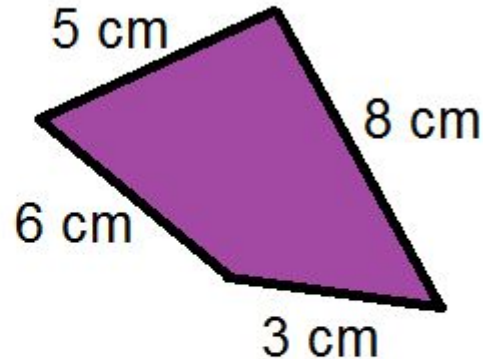
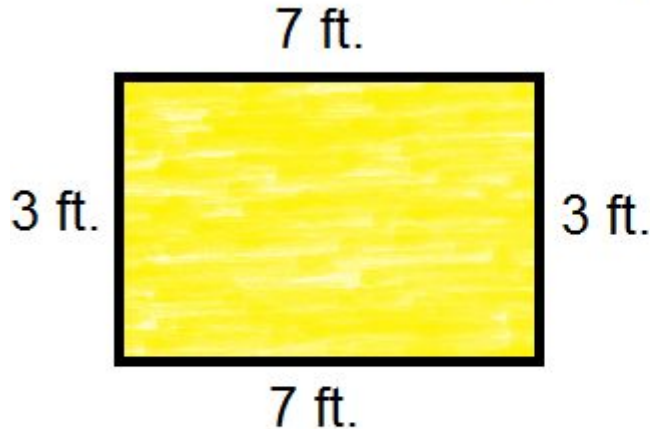
How do you
find the
perimeter?

Perimeter

What is the perimeter of the shapes below?

Remember- Add up all the sides to get the perimeter

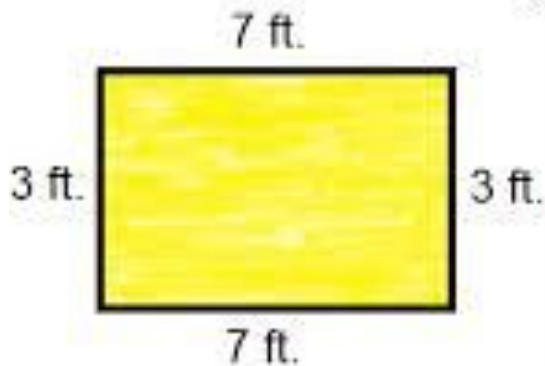
Finding Perimeter



Perimeter

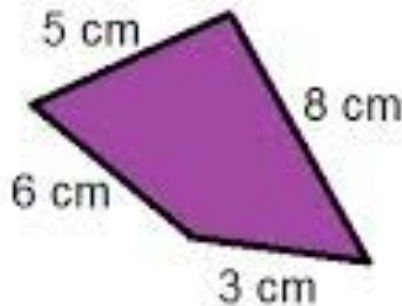
Rectangle Perimeter: 20 ft.

Quadrilateral Perimeter: 22 cm



$$7 + 3 + 7 + 3 = 20$$

The perimeter is 20 feet.



$$5 + 8 + 3 + 6 = 22$$

The perimeter is 22 cm.

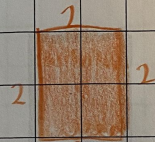
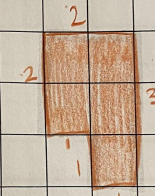
Perimeter

Count the number of lines to find the perimeter of the shape

Perimeter 1

Name _____

Trace around the perimeter of each shape with a crayon. Count the number of lines to find the perimeter of a shape.

 P= 8	P=	 P= 10	P=
P=		P=	
Shade in your own shape			
P=		P=	

Grade 2 • Unit 6 • Lesson 17

Guided Math, By Reagan Tunstall

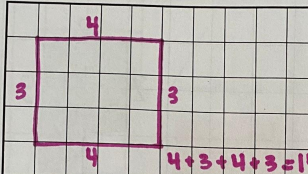
Perimeter

Make your own shapes and find the perimeter for each shape

Perimeter 2

Name _____

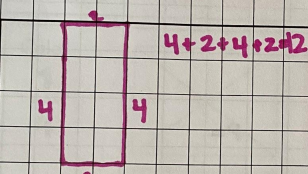
Make different shapes on the graph paper with different colored crayons. Find the perimeter for each shape. Count the number of lines to find the perimeter of a shape.



$4 + 3 + 4 + 3 = 14$

P= 14

P=



$4 + 2 + 4 + 2 = 12$

P= 12

P=

P=

P=

40 Grade 2 • Unit 6 • Lesson 17

Guided Math: By Reagan Turnstall

© Reagan Turnstall



THURSDAY

Area

Watch the BrainPop “Area”

Username:Elasky2nd

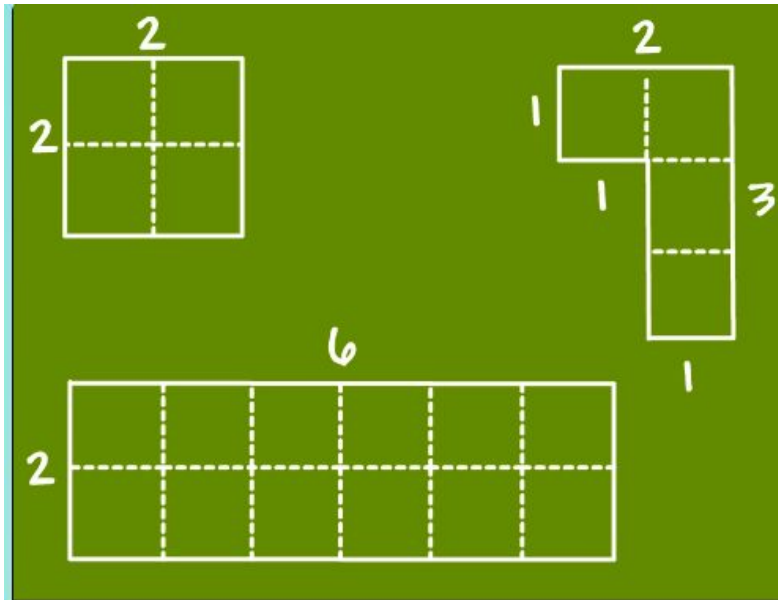
Password: fit123

Area

Measurement
of space
inside a shape

How do you find
the area?

- Counting the squares inside the shape



What are
square
units?

You can find the area of a shape by dividing it into equal squares and counting them.

Area

Count the number of squares inside the shapes to find the area.

Area 1

Dot or color the area of each shape with a crayon. Count the number of squares inside the shape to find the area.

1 2
3 4
A= 4

A=

1 2
3 4
5
A= 5

A=

A=

Shade in your own shape

A=

A=

Guided Math. By Reason

Area

Make your own shapes and count the number of squares inside the shapes to find the area.

Area 2

Make different shapes on the graph paper with different colored crayons. Find the area for each shape. Count the number of squares inside the shape to find the area.

1	2	3	4	5	6
7	8	9	10	11	12

A= 12

1	2	3	4	5	6	7	8	9
---	---	---	---	---	---	---	---	---

A= 9

A=

A=

A=

Guided Math, By Reagan Turner

A decorative graphic in the top right corner consisting of several triangles in different shades of blue (dark, medium, and light) arranged in a geometric pattern.

FRIDAY

Review

Polygons:

- Must be closed
- Straight sides
- NO curves

Quadrilateral:

- Polygon
- Has 4 sides

Congruent:

- Same shape
- Same size
- May be a different position

Similar:

- Same shape
- May be a different size
- May be a different position