

Name _____

Distance Learning

Mr. EJ's Distance Learning 5-26 to 5-29

Monday

- ☐ No School Memorial Day

Tuesday

- ☐ Morning Meeting Question
- ☐ Math: 14-4 Converting Customary Units
- ☐ Reading & Writing: Alternate Line Rhyming "Today Is Very Boring"
- ☐ City of Ember Chapter 16
- ☐ Science: How Birds-T0-Be Get Oxygen Inside Eggs

Wednesday

- ☐ Morning Meeting Question
- ☐ Math: 14-5 Converting Metric Units
- ☐ Reading & Writing: Animal Poems
- ☐ City of Ember: Chapter 17
- ☐ Science: The Recovery of the Channel Island Fox

Thursday

- ☐ Morning Meeting Question
- ☐ Math: 14-6 Elapsed Time
- ☐ Reading & Writing: Nature Observation Poem
- ☐ City of Ember: Chapter 18/19
- ☐ Science: Secrets of the Snowy Owl

Friday

- ☐ Morning Meeting Question
- ☐ Math: 14-7 Elapsed Time in Other Units
- ☐ Reading & Writing: Extended Metaphor Poems "The Onion"
- ☐ City of Ember: Chapter 20
- ☐ Science: Is it a good idea to wipe out vampire bats?

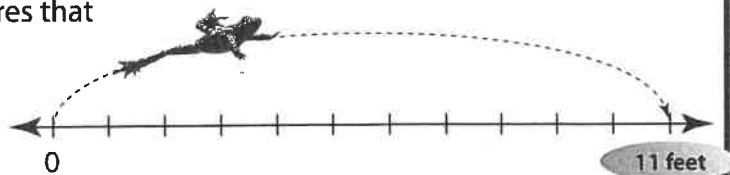
Lesson 14-4

Understand It!
To convert from larger units of measure to smaller units of measure, multiply. To convert from smaller units to larger units, divide.

Converting Customary Units

How do you change from one unit of length to another?

Some frogs can jump 11 feet.
What are other measures that can represent the same distance?



Other Examples

5 lb = oz

Think 1 lb = 16 oz

Find 5×16 .

5 lb = 80 oz

20 qt = gal

Think 4 qt = 1 gal

Find $20 \div 4$.

20 qt = 5 gal

Length

1 foot = 12 inches (in.)

1 yard = 3 feet (ft) = 36 in.

1 mile (mi) = 1,760 yd
= 5,280 ft

Capacity

1 gallon = 4 quarts (qt)

1 quart = 2 pints (pt)

1 pint = 2 cups (c)

1 cup = 8 fluid ounces (fl oz)

Weight

1 ton (T) = 2,000 pounds (lb)

1 lb = 16 ounces (oz)

Guided Practice*

Do you know HOW?

In 1 through 3, convert each measurement.

1. 9 ft = yd

2. 9 lb = oz

3. 12 fl oz = c fl oz

Do you UNDERSTAND?

4. If you want to convert feet to miles, do you multiply or divide?

5. **Writing to Explain** Why would you convert 4 gal 5 qt to 5 gal 1 qt?

Independent Practice

In 6 through 23, convert each measurement.

6. 36 pt = qt

7. 2 mi = ft

8. 6,000 lb = T

9. 3 yd = in.

10. 32 pt = gal

11. 32 oz = lb

12. 1 qt = gal

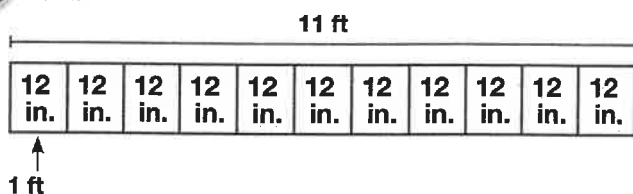
13. 8 oz = lb

14. 18 yd = in.

To change larger units to smaller units, multiply.

11 ft = in.

Think 1 foot = 12 inches.



Find 11×12 .

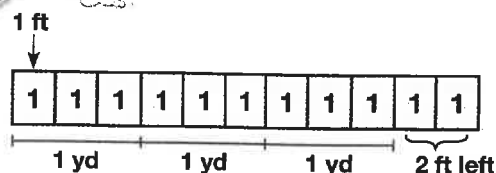
$11 \times 12 = 132$

11 feet = 132 inches

To change smaller units to larger units, divide.

11 ft = yd ft

Think 3 feet = 1 yard.



Find $11 \div 3$.

$11 \div 3 = 3 \text{ R}2$

11 feet = 3 yards, 2 feet

15. 1 T = oz

16. 440 yd = mi

17. 5 gal = c

18. 12 ft 7 in. = in.

19. 30 qt = gal qt

20. 52 ft = yd ft

21. 4 qt 1 pt = pt

22. 4 yd 2 ft = in.

23. 1 gal 1 c = fl oz

Problem Solving

24. Sue is making punch. She needs 3 cups of orange juice and 6 pints of lemonade. How many fluid ounces of orange juice and how many quarts of lemonade does she need?

25. Kirk packed 6 bushels of corn. A bushel of corn weighs 35 pounds. How many ounces of corn did he pack in each bushel? How many ounces did he pack in all?

26. The world's longest known venomous snake is the king cobra, which measures about 18 feet. The world's shortest known venomous snake is the dwarf adder, which measures about 8 inches. What is the difference in length?

27. One tablespoon (tbsp) equals 3 teaspoons (tsp), and 1 fluid ounce equals 2 tablespoons. A recipe calls for 3 tablespoons of pineapple juice. A jar of pineapple juice has 12 fluid ounces. How many teaspoons of juice are in the jar?

28. Don drives a truck that weighs 1 ton. He picked up 2 tons of patio stones. Which is the number of pounds the truck and the patio stones weigh together?

29. **Think About the Process** Hector has a roll of craft wire. There are 36 yards of wire on the roll. Which expression can Hector use to find the number of inches of wire that are on the roll?

A 60 lb

C 6,000 lb

B 600 lb

D 60,000 lb

A $(36 \times 3) \times 12$

C $(36 \times 3) \div 12$

B $(36 \div 3) \times 12$

D $(36 \div 3) \div 12$

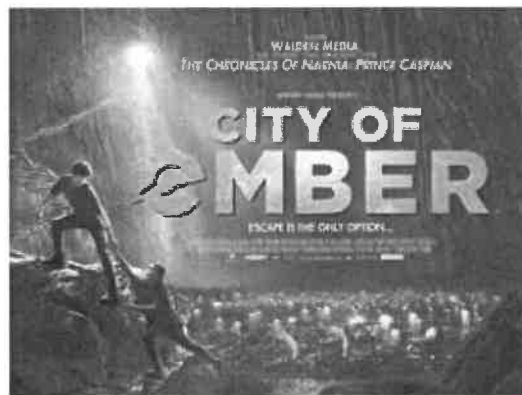
Today Is Very Boring

Today is very boring,
it's a very boring day,
there is nothing much to look at,
there is nothing much to say,
there's a peacock on my sneakers,
there's a penguin on my head,
there's a dormouse on my doorstep,
I am going back to bed.

Today is very boring,
it is boring through and through,
there is absolutely nothing
that I think I want to do,
I see giants riding rhinos,
and an ogre with a sword,
there's a dragon blowing smoke rings,
I am positively bored.

Today is very boring,
I can hardly help by yawn,
there's a flying saucer landing
in the middle of my lawn,
a volcano just erupted
less than half a mile away,
and I think I felt an earthquake,
it's a very boring day.

by Jack Perlutsky



Chapter 16

**Skunk Bear**

How Birds-To-Be Get Oxygen Inside Eggs

April 17, 2018 · 5:45 AM ET

ADAM COLE

RYAN KELLMAN

How Birds Get Oxygen Inside Their Eggs

*NPR's Skunk Bear YouTube*

Your body needs oxygen to function — and that was true even before you were born. As you grew inside your mother's womb, even before you had working lungs, your cells were crying out for oxygen. And your mother kindly answered that call. Oxygen and nutrients from her blood made their way down your umbilical cord, through your belly button, and fueled your body.

Now consider a chick — before it has hatched. It's cut off from its mother by a hard shell and a couple membranes. There's no way for the hen to get her still-developing offspring the oxygen it desperately needs; the pre-hatchling is on its own.

So why don't bird embryos suffocate inside their eggs?

In Skunk Bear's newest episode, we use the magic of animation to take you inside an egg and explore the delicate system that keeps these little things alive.

Follow Skunk Bear, NPR's science show, on YouTube and Facebook.

oxygen birds breathing eggs

Subscribe to the Short Wave Podcast

NPR ONE

APPLE PODCASTS

GOOGLE PODCASTS

POCKET CASTS

SPOTIFY

AMAZON ALEXA

RSS

More Stories From NPR

Lesson 14-5

Understand It!
To convert from larger units of measure to smaller units of measure, multiply. To convert from smaller units to larger units, divide.

Converting Metric Units

How do you convert metric units?

You know the following relationships among commonly used metric units of measurement.

You can use these relationships to convert metric units.

Length

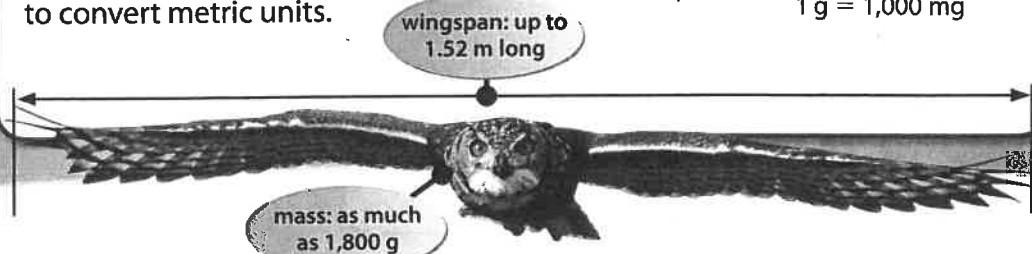
1 cm = 10 mm
1 m = 100 cm
1 m = 1,000 mm
1 km = 1,000 m

Capacity

1 L = 1,000 mL

Mass

1 kg = 1,000 g
1 g = 1,000 mg



Other Examples

$$2,350 \text{ mL} = \boxed{} \text{ L}$$

Think 1,000 mL = 1 L

Find $2,350 \div 1,000$.

$$2,350 \div 1,000 = 2.35$$

$$2,350 \text{ mL} = 2.35 \text{ L}$$

$$2.5 \text{ kg} = \boxed{} \text{ g}$$

Think 1 kg = 1,000 g

Find $2.5 \times 1,000$.

$$2.5 \times 1,000 = 2,500$$

$$2.5 \text{ kg} = 2,500 \text{ g}$$

Guided Practice*

Do you know HOW?

In 1 through 6, convert each measurement.

1. 80 mm = cm 2. 5 L = mL

3. 3,000 g = kg 4. 140 cm = m

5. 0.06 g = mg 6. 23.8 m = km

Do you UNDERSTAND?

7. **Writing to Explain** Explain how to convert 4,300 milliliters to liters.
8. Which is the greater length: 1 km or 137,000 mm?

Independent Practice

In 9 through 20, convert each measurement.

9. 45 m = cm

10. 12,000 mg = g

11. 780 mm = cm

12. 650 L = mL

13. 3.9 kg = g

14. 0.4 cm = mm

15. 1.45 g = mg

16. 18 mL = L

17. 62.9 m = km

18. 522 mL = L

19. 522 L = mL

20. 1,320 mg = g

Convert 1.52 meters to centimeters.

To change from larger units to smaller units, multiply.

$$1.52 \text{ m} = \square \text{ cm}$$

Think $1 \text{ m} = 100 \text{ cm}$

Find 1.52×100 .

$$1.52 \times 100 = 152 \quad \text{Use mental math.}$$

$$1.52 \text{ m} = 152 \text{ cm} \quad \text{Move the decimal point 2 places to the right.}$$

Convert 1,800 grams to kilograms.

To change from smaller units to larger units, divide.

$$1,800 \text{ g} = \square \text{ kg}$$

Think $1,000 \text{ g} = 1 \text{ kg}$

Find $1,800 \div 1,000$.

$$1,800 \div 1,000 = 1.8 \quad \text{Use mental math.}$$

$$1,800 \text{ g} = 1.8 \text{ kg} \quad \text{Write 1,800 as 1,800.0 and move the decimal point 3 places to the left.}$$

In 21 through 26, compare the measurements. Use $<$, $>$, or $=$ for each \bigcirc .

21. $2,000 \text{ g} \bigcirc 3 \text{ kg}$

22. $680 \text{ mm} \bigcirc 68 \text{ cm}$

23. $0.91 \text{ L} \bigcirc 91 \text{ mL}$

24. $7.24 \text{ m} \bigcirc 7,240 \text{ cm}$

25. $56 \text{ mL} \bigcirc 0.056 \text{ L}$

26. $94 \text{ g} \bigcirc 9,400 \text{ mg}$

Problem Solving

27. The instructions for a science experiment call for 227 milligrams of potassium. What is the difference between this amount and 1 gram?

28. A drink pitcher holds 4.5 liters of lemonade. If there are 250 milliliters in a serving, how many servings does the pitcher hold?

29. **Estimation** As of 2006, the longest car ever built is 30.5 meters long. A meter is a little longer than a yard. Estimate the length of this car in feet.

30. The width of a cruise ship called the *Canberra* was 102 feet. What was the width of the *Canberra* in yards?

31. **Writing to Explain** Shayla says that one kilometer is equal to one million millimeters. Is she correct? Explain.

32. The area of a rectangular garden is 240 square feet. If the length of the garden is 20 feet, what is its width?

33. The longest mammal is the blue whale. Its length has been reported to reach 31 meters. How many centimeters is this?

34. **Think About the Process** How can you convert kilograms to grams?

A 3.1 cm

B 310 cm

C 3,100 cm

D 31,000 cm

A Divide by 100.

B Multiply by 100.

C Divide by 1,000.

D Multiply by 1,000.

Whale

Too heavy to live
On land, where only
Winged things escape
The weight of stones,

His whole hill of
Flesh floats easily
In the sea, light as
Dust in sun-baths

Or earth balance
Buoyant in thin space—
Every gravity, whether
Gnat, atom, or planet,

Made, like a whale,
To fit where it is
Found: poised perfectly
In its own place.

By Valerie Worth

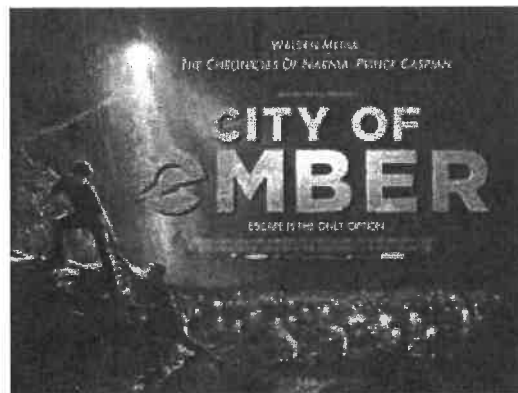
Bat

The bat sees
Only in the dark
Side of earth,
Taking dust and
Clay for his
Colors, holding
Aloof from
The gaudy sun;

He cleaves to
The cave roof
Like a grim
Flake of flint,
Or flings out
Like a surly
Stone thrown
After the sun:

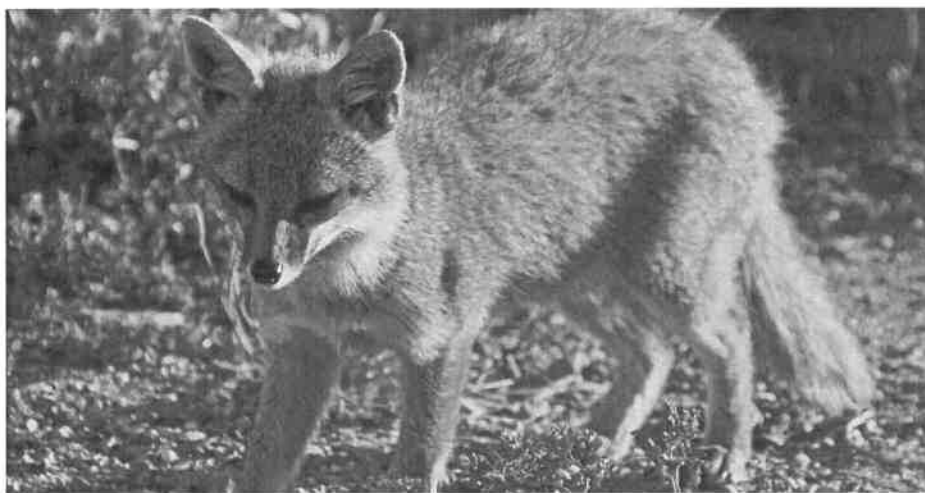
Knowing no better
Than hardheaded
Earth does,
That in his
Own blind
Veins run
The lighthearted lavas
Of the sun.

By Valerie Worth



Chapter 17

Type keywords...



🕒 17 DEC 2018 ✎ EMILY HEBER 💬 0 📁 ISLAND NEWS, NEWS

NPR's Skunk Bear: The Recovery of the Channel Island Fox

NPR's series *Skunk Bear* features the recovery of the Channel Island Fox and the threats that almost led them to extinction.

Off the coast of Southern California, there are eight islands that make up the Channel Islands Archipelago. Six of those islands are home to their own subspecies of Channel Island Fox. These small foxes only weigh

CARES Act

EXPANDS TAX DEDUCTIONS FOR CHARITABLE GIVING

[LEARN MORE](#)

...

DOUBLE YOUR IMPACT

...

New donors making a contribution of \$25,000 - \$100,00 are eligible for a 1:1 match through Island Conservation's Clipperton Matching Fund. Existing Island Conservation donors who increase their giving by \$25,000 are eligible to match the amount of their increased giving up to \$100,000.

OTHER WAYS TO GIVE

...



Gifts through Your Estate Plan



Gifts of Stock



Gifts from Your IRA Fund



Other Non-cash Gifts

[WHY ISLANDS](#)[WHERE WE WORK](#) ▾[ABOUT IC](#) ▾[HOW TO HELP](#) ▾[BLOG](#) ▾[CONSERVATION SCIENCE](#) ▾[ESPAÑOL](#)

to the invasive Golden Eagles and feral pigs. On San Nicolas Island, the foxes were threatened largely due to the introduction of diseases found in domesticated dogs and feral cats that competed with foxes for food and resources.

Luckily, in the early 2000's conservationists stepped in to help these small foxes. In 2010, the U.S. Navy, U.S. Fish and Wildlife Service, Island Conservation, Institute for Wildlife Studies, The Humane Society of the United States, and the Montrose Settlement Restoration Program completed the removal and relocation of feral cats from San Nicolas Island. At this same time, the Nature Conservancy and their partners worked to restore the Santa Cruz Island population.

In 2016, the Channel Island Fox was removed from the Endangered Species List and became the fastest recovering species to ever be listed. Now, native foxes are thriving but researchers are still keeping an eye on their populations to ensure the Channel Island Fox will continue to thrive.

Watch the video to learn more about the recovery of the Channel Island Fox on Santa Cruz Island.

The Hopeful Story Of A Doomed Fox

TAX-DEDUCTIBLE

Your donation is tax-deductible. Donation to Island Conservation, a 501(c)(3) charity, are tax-deductible to the fullest extent allowed by law. Island Conservation's tax Identification number is: 91-1839907

OUR COMMITMENT TO OUR DONORS

We will not sell, share or trade our donors' names or personal information with any other organization, nor send mailings to our donors on behalf of other entities.

This policy applies to all donor information received by Island Conservation, both online and offline as well as any electronic, written, or verbal communications.

Lesson 14-6

Understand It!
Units of time can be added and subtracted.

Elapsed Time

How can you find how much time passes between two events?

Elapsed time is the difference between two times.

A plane flies from Seattle to San Francisco.
How long is the flight time?

Find the elapsed time between 8:55 A.M. and 11:05 A.M.



Other Examples

How can you use elapsed time to find when an event began or ended?

A plane from Chicago arrived in Nashville at 7:10 P.M. The flight time was 1 hour 25 minutes. What time did the plane leave Chicago?

Shaylun's flight left at 4:40 P.M. and took 2 hours 45 minutes. What time did the plane land?

A 5:25 P.M.

C 7:25 P.M.

B 6:25 P.M.

D 8:25 P.M.

You can **subtract** to find the start time.

You can **add** to find the end time.

End Time – Elapsed Time = Start Time

Start time + Elapsed Time = End Time

$$\begin{array}{r} 6 \text{ h } 70 \text{ min} \\ 7 \text{ h } 10 \text{ min} \\ - 1 \text{ h } 25 \text{ min} \\ \hline 5 \text{ h } 45 \text{ min} \end{array}$$

25 min > 10 min
Rename to subtract.

$$\begin{array}{r} 4 \text{ h } 40 \text{ min} \\ + 2 \text{ h } 45 \text{ min} \\ \hline 6 \text{ h } 85 \text{ min} \\ = 7 \text{ h } 25 \text{ min} \end{array}$$

Tip Rename 85 min as 1 h 25 min.

The plane left Chicago at 5:45 P.M.

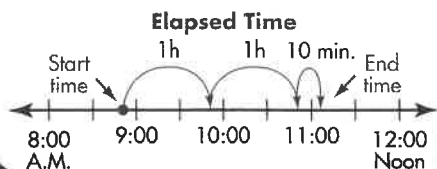
Shaylun's flight arrived at 7:25 P.M.

Explain It

1. How could you count on a number line to solve the first Other Example?
2. How could you check the subtraction used to find the start time in the first Other Example?
3. In the second Other Example, why is 85 minutes renamed as 1 hour 25 minutes?

One Way

Count on a number line.



$$1 \text{ h} + 1 \text{ h} + 10 \text{ min} = 2 \text{ h } 10 \text{ min}$$

The elapsed time of the flight is 2 hours 10 minutes.

Another Way

Subtract.

End Time – Start Time = Elapsed Time

The end time, or the time the flight ended, is 11:05 A.M.

The start time, or the time the flight began, is 8:55 A.M.

$$\begin{array}{r} 10 \text{ h } 65 \text{ min} \\ 11 \text{ h } 05 \text{ min} \\ - 8 \text{ h } 55 \text{ min} \\ \hline 2 \text{ h } 10 \text{ min} \end{array}$$

55 min > 5 min
Rename to subtract.

The elapsed time of the flight is 2 hours 10 minutes.

Guided Practice*

Do you know HOW?

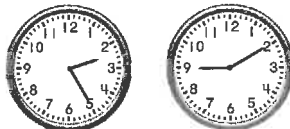
For 1 through 6, find each elapsed time.

1. 3:00 A.M. to 11:24 A.M.
2. 3:46 P.M. to 8:59 P.M.
3. 2:12 P.M. to 6:23 P.M.
4. 6:39 A.M. to 9:14 A.M.

5.



6.



Do you UNDERSTAND?

7. **Writing to Explain** In order to subtract 6 h 43 min from 12 h 32 min, do you need to rename 12 h 32 min? Why?
8. A flight from El Paso to Austin takes 1 hour 30 minutes. The flight arrives at 5:16 P.M. At what time did the flight leave El Paso?
9. A flight from Minneapolis to Dallas takes 2 hours 32 minutes. The flight departs at 8:47 A.M. At what time does the flight arrive?
10. If you subtract the start time from the end time, what will the difference be?

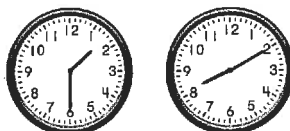
Independent Practice

For 11 through 14, find each elapsed time.

11. 2:34 A.M. to 8:20 A.M.

12. 11:00 P.M. to 11:34 P.M.

13.



14.



Animated Glossary
www.pearsonsuccessnet.com

Mixed Problem Solving

This map of the United States shows the six different time zones.



Alaska

Anchorage, AK



Hawaii

Honolulu, HI

Pacific

Mountain

Central

Eastern



1. In which time zone are you located?

3. What time does your school start in the morning? What time is it in each of the other time zones? Draw clock hands to show each time.



Honolulu, HI

4. Your favorite television program is scheduled for 7:00 P.M. Eastern Time. What time does that program start in each of the following time zones?

a Pacific

c Alaska

b Hawaii

d Mountain

2. The President gave a speech in Denver, CO, at 7:30 P.M. It was broadcast live in each of the other time zones. The speech lasted 2 hours 15 minutes. Determine when the President's speech began and ended in each of the following cities:

a Seattle, WA: Start _____
End _____

b Santa Fe, NM: Start _____
End _____

c Houston, TX: Start _____
End _____

d Miami, FL: Start _____
End _____

e Honolulu, HI: Start _____
End _____

f Anchorage, AK: Start _____
End _____

5. **Strategy Focus** Solve using the strategy, Write an Equation. Theo earns \$7 an hour washing cars. How many hours will he need to work to earn \$847?
Let h = the number of hours of work.

The Little Turtle

Author: Vachel Lindsay - 1879-1931

There was a little turtle.

He lived in a box.

He swam in a puddle.

He climbed on the rocks.

He snapped at a mosquito.

He snapped at a flea.

He snapped at a minnow.

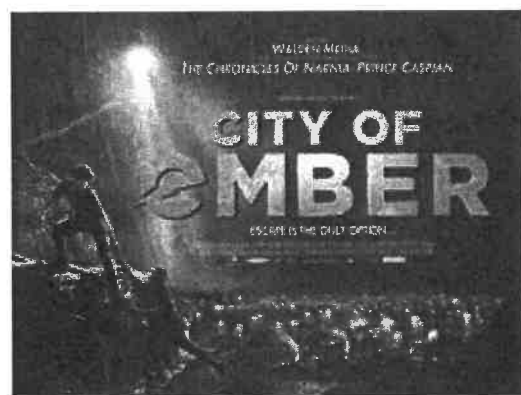
And he snapped at me.

He caught the mosquito.

He caught the flea.

He caught the minnow.

But he didn't catch me.



chapter 18/19



Baltimore

[🏠 \(HTTPS://WWW.PROJECTSNOWSTORM.ORG/\) >](https://www.projectsnowstorm.org/)
SNOWSTORM OWLS (WINTER 2014-15) [\(HTTPS://WWW.PROJECTSNOWSTORM.ORG/MAPS-2014-15/\) >](https://www.projectsnowstorm.org/maps-2014-15/)
BALTIMORE [\(HTTPS://WWW.PROJECTSNOWSTORM.ORG/MAPS-2014-15/BALTIMORE/\)](https://www.projectsnowstorm.org/maps-2014-15/baltimore/)

This male was banded as an immature by Steve Huy after being trapped March 14, 2014 by APHIS Wildlife Services at Martin State Airport in Baltimore, MD, and relocated to western Maryland. Baltimore was recaptured at Martin State Airport on Feb. 13, 2015, fitted with a transmitter and relocated to Assateague Island National Seashore, MD, on Feb. 14, 2015.

In 2015, Baltimore reappeared in December and spent the winter of 2015-16 on and around Amherst Island in northeast Lake Ontario, and was last detected March 27, 2016, just north of Lake Ontario. Baltimore checked back in for the first time on Christmas Day, 2016, and began uploading stored spring and summer data from his transmitter. Unfortunately, his transmitter failed before sending all of its data. Baltimore wintered near Arnprior, ON, in the Ottawa River Valley, and evaded multiple attempts to retrap him and remove his malfunctioning trasnmitter. He was monitored visually all winter, however, and was last detected in late March 2017, when he apparently migrated north.

In late 2017 Baltimore returned to the Arnprior area, and in February 2018 he was retrapped, his transmitter removed and released. Based on similarities in plumage and behavior, it appears Baltimore reoccupied his winter territory near Arnprior for the third year in 2018-19, but he was not seen in 2019-20.

Baltimore's transmitter was sponsored by the Baltimore Bird Club. Please consider a donation of your own to Project SNOWstorm to help further our work.

Baltimore was featured in NPR's Skunk Bear video series, giving a fascinating view of his behavior and the locations he visited.

Secrets Of The Snowy Owl | NPR's SKUNK BEAR



+

-

Find Oldest Point

Zoom to All Points

Find Most Recent Point

Only Show Last 100 Points

CELLULAR TRACKING TECHNOLOGIES

Earthstar Geographics | Source: USGS, NGA, NASA, CGIAR, GEBCO,N... Powered by Esri

Lesson 14-7

Understand It!
Units of time can
be added and
subtracted.

Elapsed Time in Other Units

How can you find how much time passes
between events on consecutive days?

The Hernandez family took a train that left
Washington, D.C., on Tuesday and arrived in
Maysville, Kentucky, on Wednesday.
How long was the train trip?

Tip Quarter to 2 is the same as 1:45.

Leave Washington,
D.C., at 1:05 P.M.
on Tuesday

Arrive in Maysville,
KY, at quarter to
2 in the morning
on Wednesday

Guided Practice*

Do you know HOW?

In 1 and 2, find the elapsed time.

1. 4:00 P.M. to 2:00 A.M.
2. 7:10 P.M. to 4:05 A.M.

In 3 and 4, find the start or end time.

3. Start: 5:12 P.M.
Elapsed: 8 h 10 min
4. End: 10:45 P.M.
Elapsed: 12 h 35 min

Do you UNDERSTAND?

5. **Writing to Explain** Suppose a train trip starts at 4:00 P.M. on a Wednesday and ends at 1:30 P.M. the next day. What is the elapsed time? Explain how you found it.
6. The Urban family took a train that left St. Paul, MN, at quarter after 2 on Monday afternoon and arrived in Longview, TX, at 20 minutes after 5 on Tuesday afternoon. How much time did the train trip take?

Independent Practice

For 7 through 9, find each elapsed time.

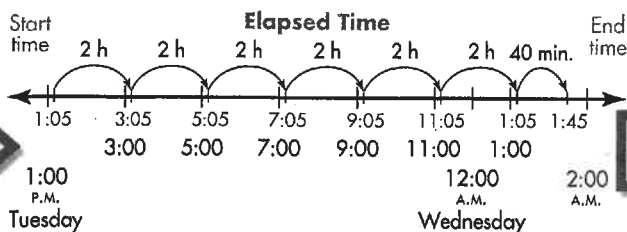
7. Quarter to 7 in the evening to 11:22 A.M.
8. 1:23 P.M. to 4:00 A.M.
9. Quarter after 11 in the morning to 6:23 P.M.

In 10 through 15, find the start or end time.

10. Start: 1:23 P.M.
Elapsed: 13 h 12 min
11. End: 3:36 A.M.
Elapsed: 6 h 2 min
12. Start: 11:00 A.M.
Elapsed: 14 h 12 min
13. End: 12:06 P.M.
Elapsed: 10 h 7 min
14. End: 1:58 P.M.
Elapsed: 3 h 58 min
15. Start: 6:36 A.M.
Elapsed: 1 h 42 min

One Way

Count on a number line.



$$2 \text{ h} + 2 \text{ h} + 2 \text{ h} + 2 \text{ h} + 2 \text{ h} + 2 \text{ h} + 40 \text{ min} = 12 \text{ h } 40 \text{ min}$$

The train trip took 12 hours 40 minutes.

Another Way

Find the elapsed time before midnight and the elapsed time after midnight.

Before midnight

11 h 60 min

~~12 h 00 min~~

- 1 h 05 min

10 h 55 min

After midnight

1:45 A.M. is

1 hour 45 minutes after midnight.

Add to find the total elapsed time.

10 h 55 min

+ 1 h 45 min

11 h 100 min = 12 h 40 min

The train trip took 12 hours 40 minutes.

Problem Solving

16. Use the table below. Find the elapsed time between stations for the *Texas Eagle* train.

City	Schedule	Elapsed Time
Chicago, IL	Depart 3:20 P.M.	-----
St. Louis, MO	Arrive 8:55 P.M.	
	Depart 9:05 P.M.	
Longview, TX	Arrive 10:20 A.M.	

19. Sun Stone, the original Aztec calendar, is a famous symbol of Mexico. Suppose you visit Mexico City to see the stone. If you arrive on Sunday at 11:00 A.M. and stay 48 hours, what time and day will you leave Mexico City?

- A 10:00 A.M. Tuesday
- B 11:00 A.M. Tuesday
- C 12:00 P.M. Tuesday
- D 11:00 A.M. Monday

21. Sandy says that $5 \times 4 = 4 \times 5$ is an example of the Associative Property of Multiplication. Is she correct? Why or why not?

17. A train from Trenton, New Jersey, leaves at 8:10 A.M. and travels 11 hours 35 minutes to Charlotte, North Carolina. What time will the train arrive in Charlotte?

18. When Tyler's grandparents retired they took a driving trip across the country. They left home on August 4 and returned 2 weeks and 4 days later. What date did they return?

20. **Think About the Process** A family took a car trip to a cousin's house as shown on the clocks below.

START



FINISH



How many hours and minutes did the car trip take?

- A 4 h
- B 4 h 40 min
- C 4 h 43 min
- D 4 h 54 min

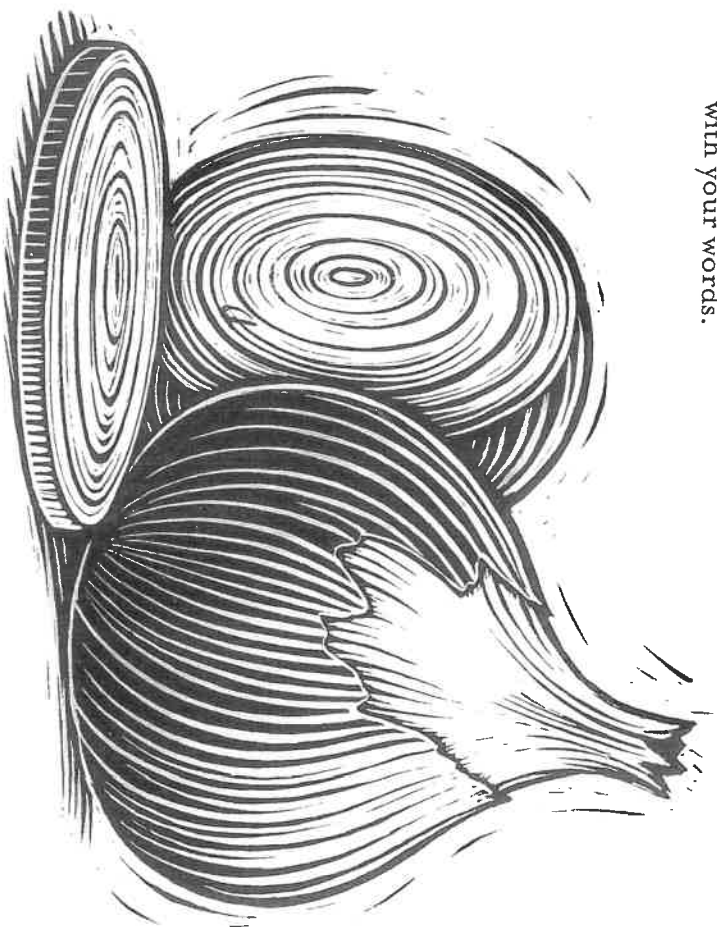
The Onion

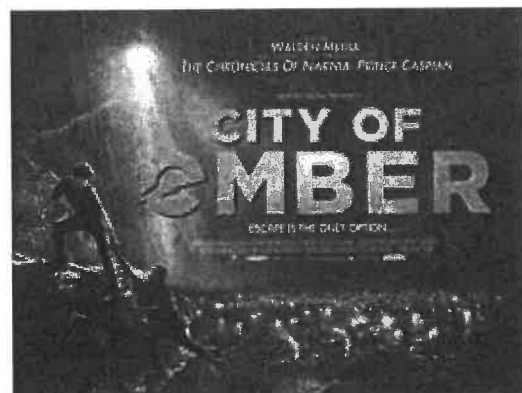
Mother is like an onion,
her golden skin
smooth and soft.

She keeps you strong.
She is good for you.

Sometimes she surprises you
with sweetness—

so you forget
how she makes *you* cry
each time you cut her
with your words.





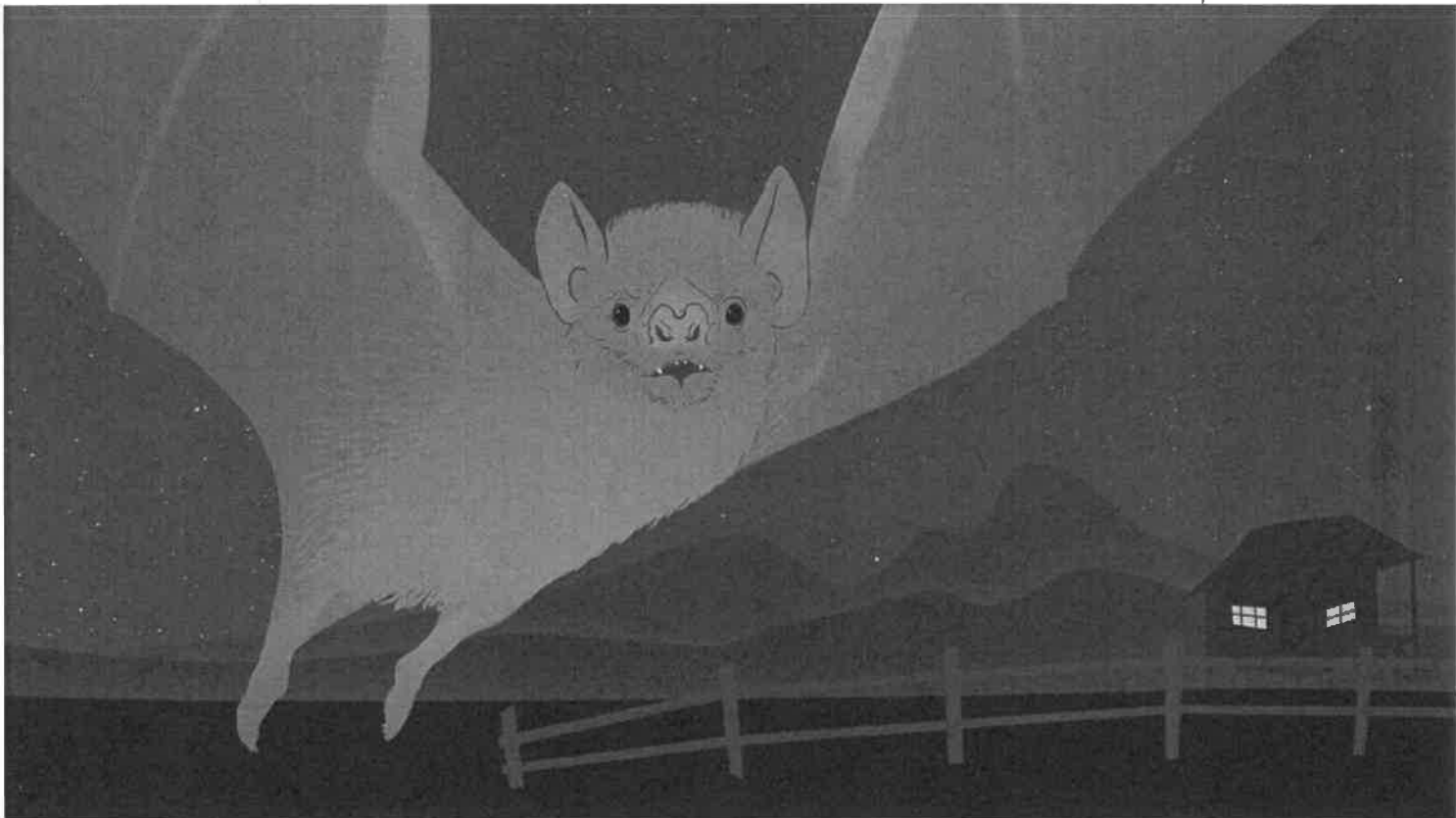
Chapter 20

Why It Might Not Be A Good Idea To Wipe Out Vampire Bats

04:21 🔗

June 06, 2017

By [Ryan Kellman](#) and [Adam Cole](#)



(Adam Cole/NPR's Skunk Bear)

wbur



Sign Up For WBUR Today

Get up to speed on the coronavirus outbreak and other news Boston is talking about. Add our daily newsletter to your morning routine.

Your email address

Sign Up

The overwhelming majority of bats are friends of humanity. They gobble up the insects that bite us and ruin our crops. They pollinate flowers and they replant forests by spreading seeds around. But as agriculture overtakes rain forests and jungles, humans have come into conflict with one bat species: the common vampire bat.

In Latin America, vampire bats drink the blood of livestock. Very rarely, these bats contract rabies. Before they die, they can spread the deadly virus to pigs, chickens, cows — and even humans. The disease costs farmers in Latin America \$30 million every year and kills dozens of people. In March of this year, a man in Brazil reportedly died of rabies after being bitten by a vampire bat.

Get the editor's can't miss stories of the week, and tips for navigating life – and weekends – during the coronavirus outbreak. Sign up now.

wbur



Sign Up For WBUR Today

Get up to speed on the coronavirus outbreak and other news Boston is talking about. Add our daily newsletter to your morning routine.